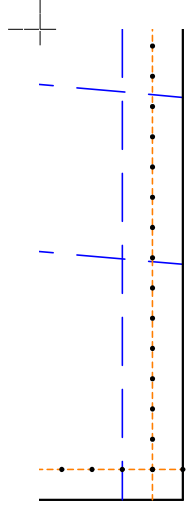


www.lzpattern.com



www.lzpattern.com

1 - $\mathbf{b} | \mathbf{f}^i | \mathbf{f}^- \dot{\cdot}$

2 - $\mathbf{a} _ \} \sim -2 \mathbf{1} \mathbf{a}^{\wedge} | \mathbf{a} - \mathbf{ib}^{\wedge} \mathbf{e}$

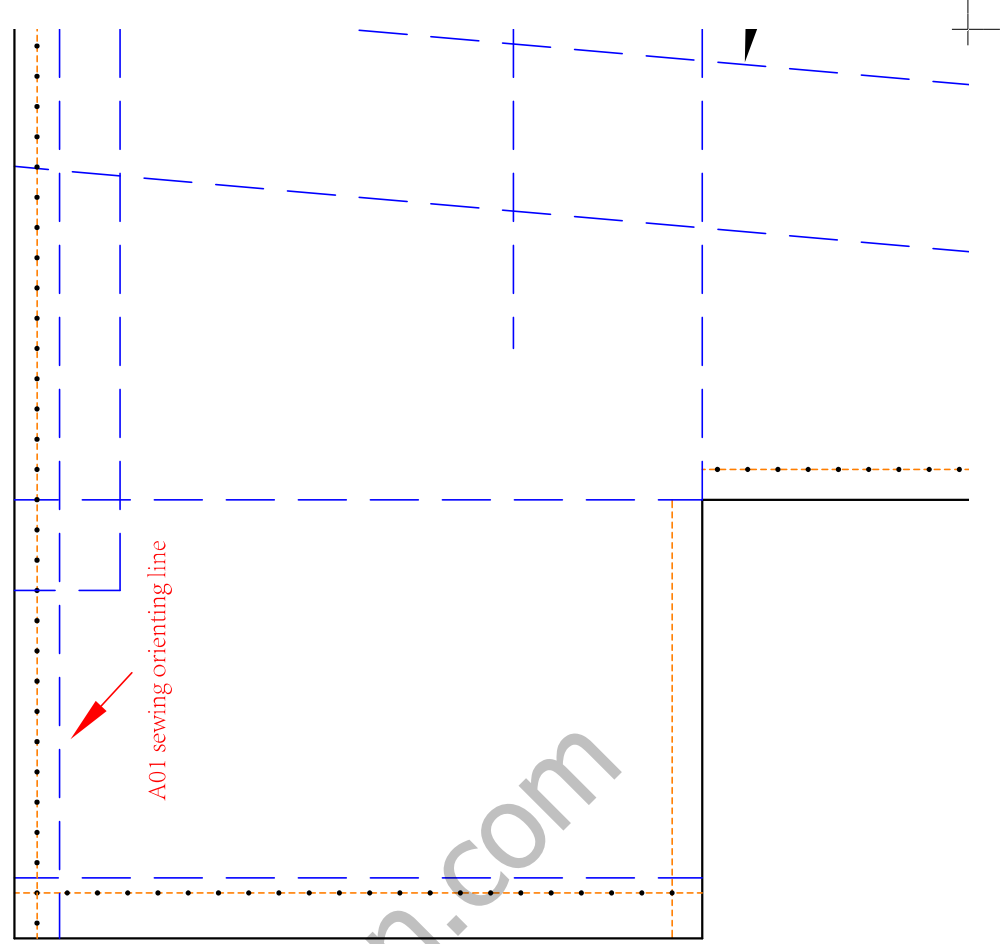
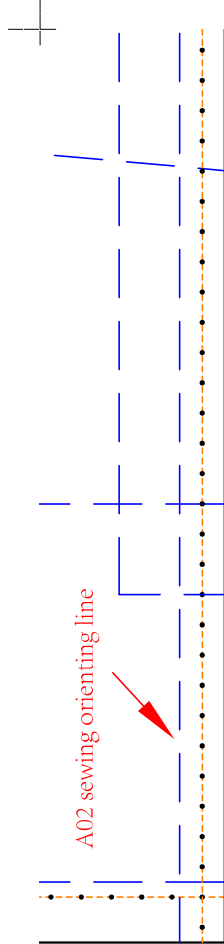
3 - $\mathbf{e}^{\wedge} | \mathbf{a} \check{\mathbf{s}}^{\wedge} | \mathbf{b};$

$_ \mathbf{a}^{\wedge} \mathbf{h} - \mathbf{fab}; \mathbf{fkkb} | \Phi 3,$

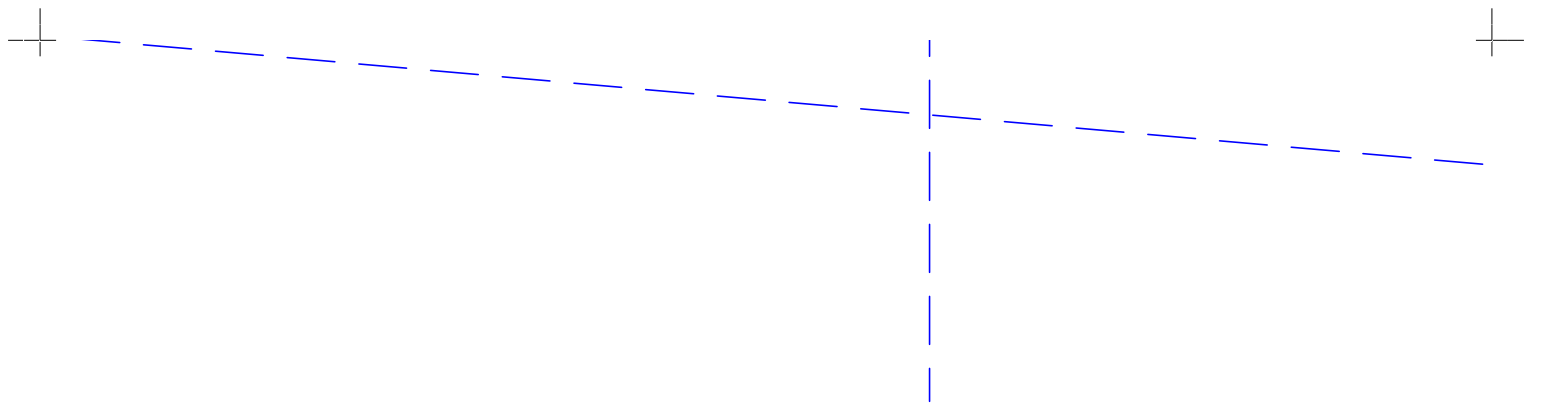
$_ \} \mathbf{a} \mathbf{e} \sim \mathbf{a} | \dot{\cdot} \Phi 3 \% \mathbf{j} |$

$\mathbf{e}^{\wedge} \mathbf{kaib} \sim \mathbf{a} | \dot{\cdot} \Phi 3 \% \mathbf{j} \` \mathbf{j}$

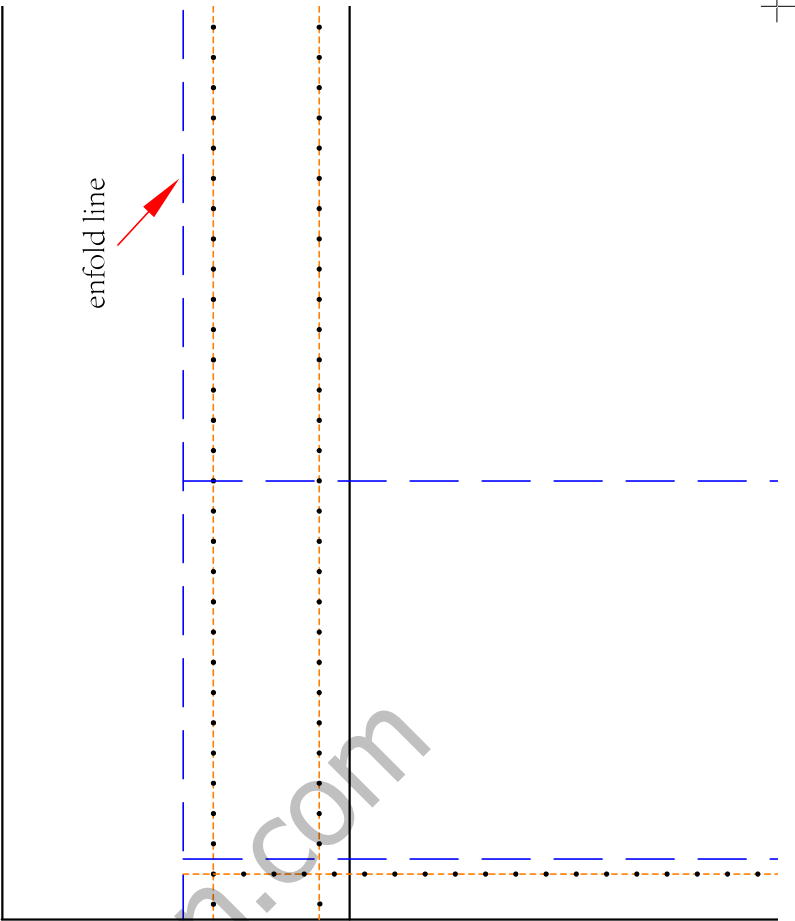
$\} \mathbf{-eb} | \mathbf{e}^{\wedge} | \mathbf{a} \check{\mathbf{s}}^{\wedge} | \mathbf{b}; \Phi 2,$



www.lzpattern.com



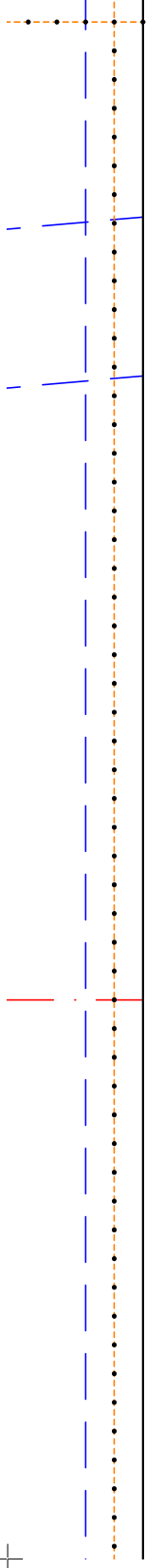
www.lzpattern.com



www.lzpattern.com



www.lzpattern.com



www.lzpattern.com

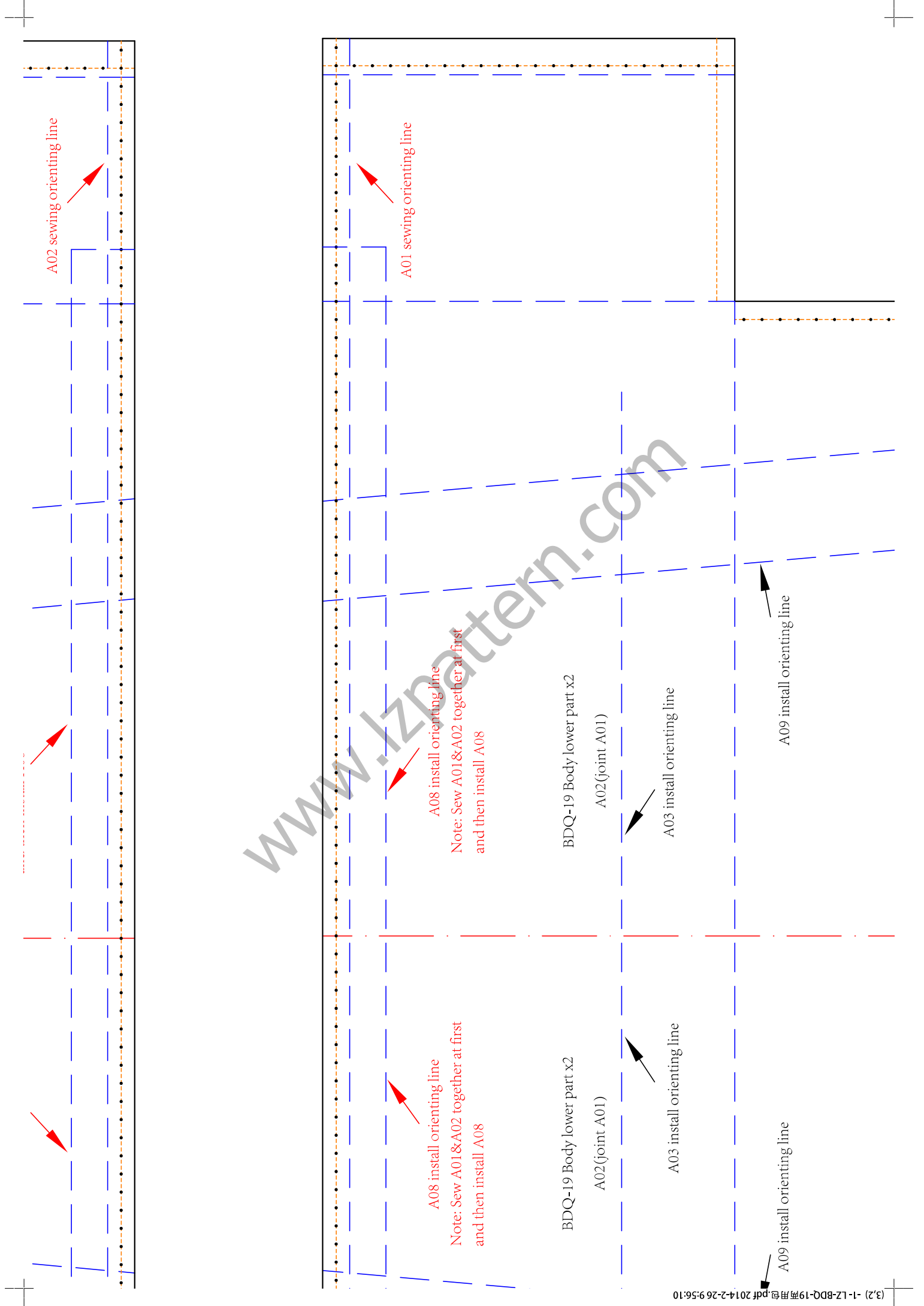
$|b| - \sim |b^{\wedge} - b \sim |b^{\sim} \wedge |b j \} |b - e^{\wedge} k 2 1 \text{æ}^{\wedge} |a - <$

$\{ 3 \sim j a \} d \sim i^{\wedge} - \sim > 5 - - \{ \sim \wedge |b _ \sim \sim \text{hib} > 3 - \sim \text{fk} _ \sim \sim \text{hib} > 3 <$

$\text{fk} d > 3 <$

$| \text{fk} d > 5 <$

$\{ 3 \sim j | \text{f}^{\text{M}} b - \wedge - i b^{\wedge} - \rightarrow 2 3 - \sim |b \sim \wedge |b j \} |b < 3 3 \% \sim j 0 \} \% \bullet \text{f} \sim b | > 2$



A02 sewing orienting line

A01 sewing orienting line

A08 install orienting line

Note: Sew A01&A02 together at first and then install A08

A08 install orienting line

Note: Sew A01&A02 together at first and then install A08

BDQ-19 Body lower part x2

A02(joint A01)

A03 install orienting line

A09 install orienting line

BDQ-19 Body lower part x2

A02(joint A01)

A03 install orienting line

A09 install orienting line

www.lzpattern.com

BDQ-19 Body upper part x2
A01 (joint A02)

BDQ-19 Body upper part x2
A01 (joint A02)

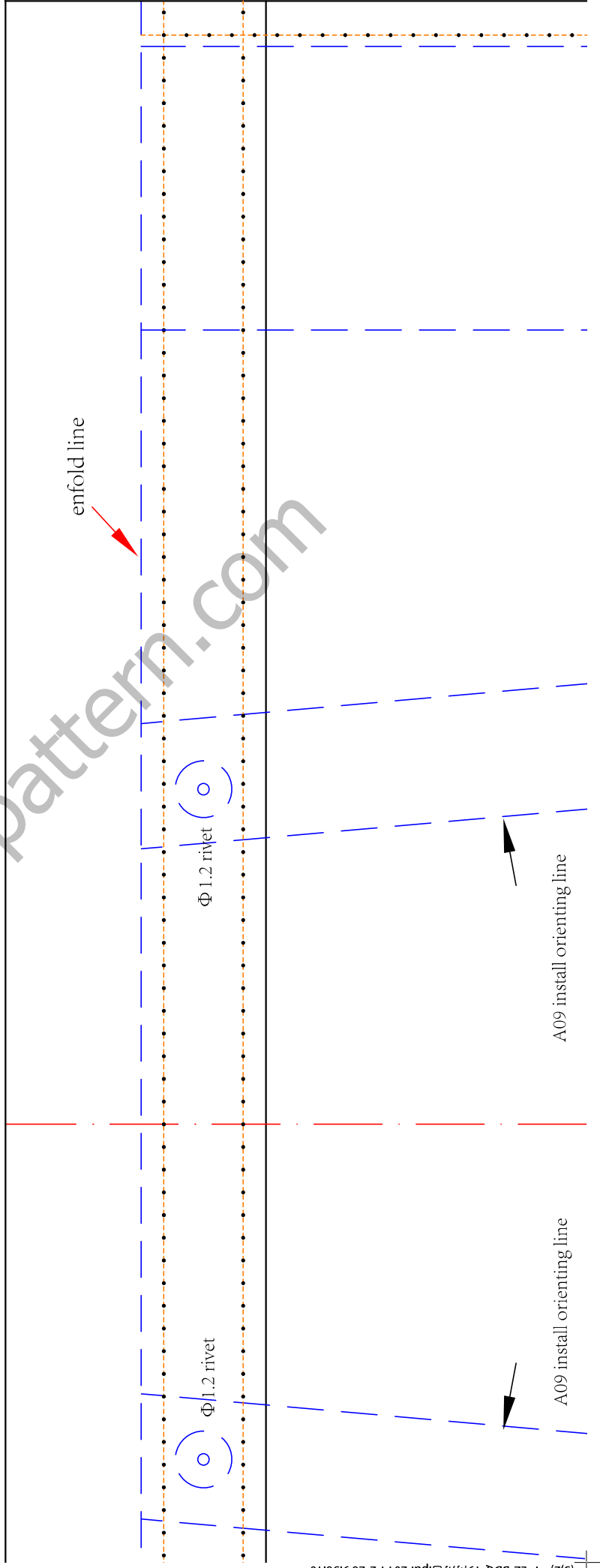
A04 install orienting line
Note: A04 is inner pocket,
install on the inside of the bag

A04 install orienting line
Note: A04 is inner pocket,
install on the inside of the bag

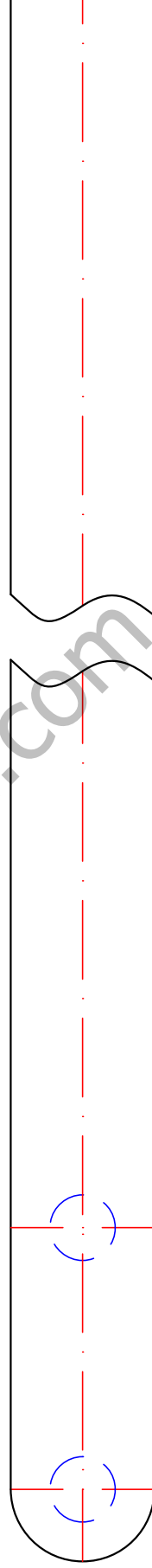
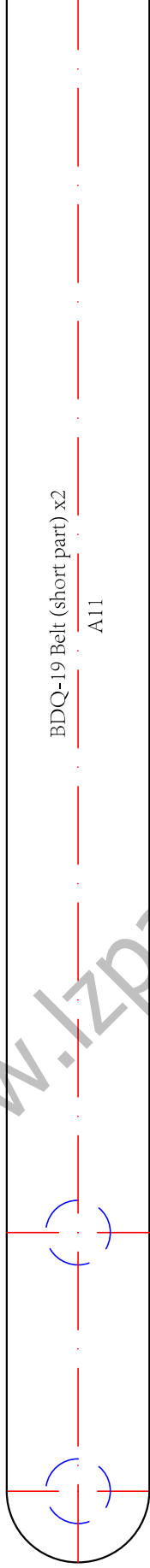
A08 install orienting line
Note: Sew A01&A02 together at first
and then install A08

A08 install orienting line
Note: Sew A01&A02 together at first
and then install A08

www.lzpattern.com



www.lzpattern.com

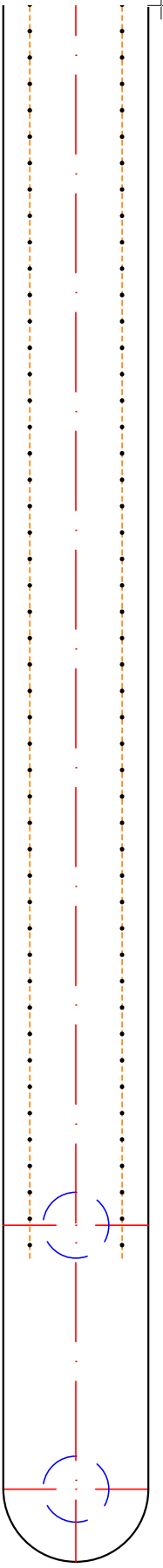
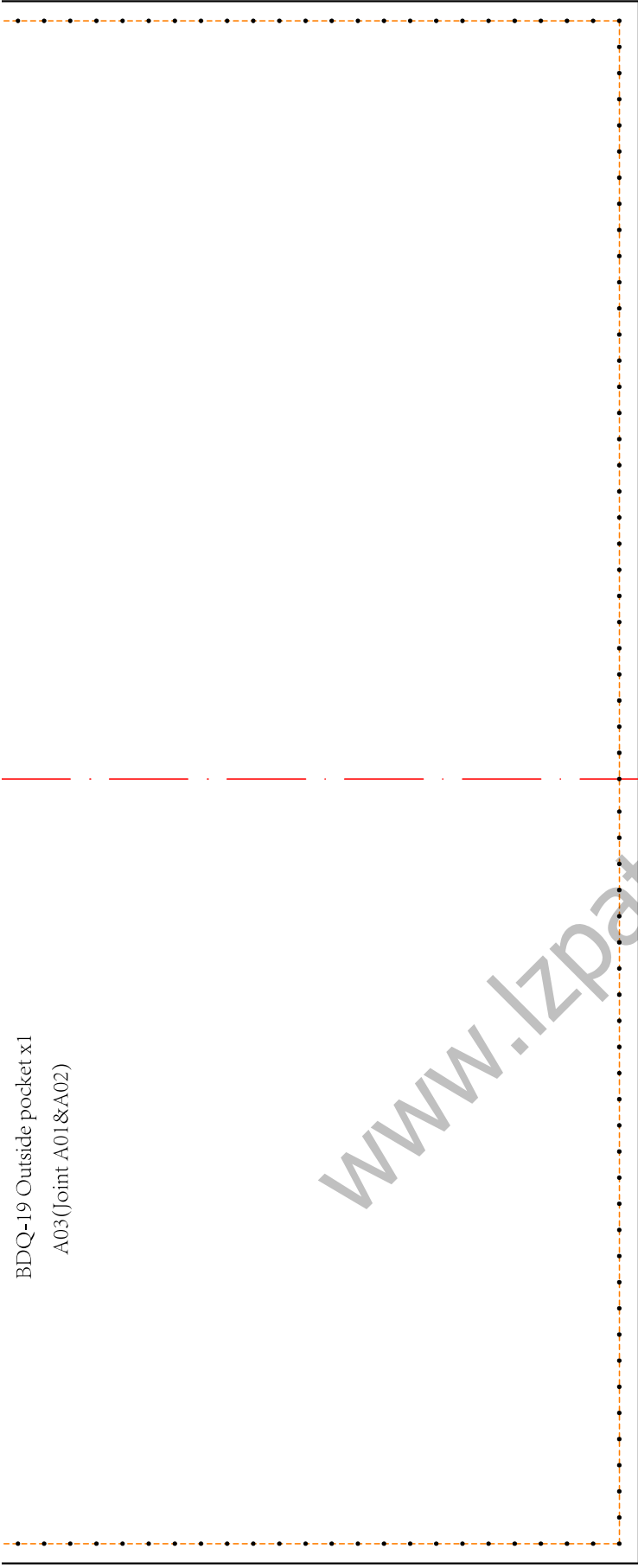


Note: we only make out the head of the belt,
Please adjust the length of it as your wish

www.lzpattern.com

BDQ-19 Outside pocket x1
A03(Joint A01&A02)

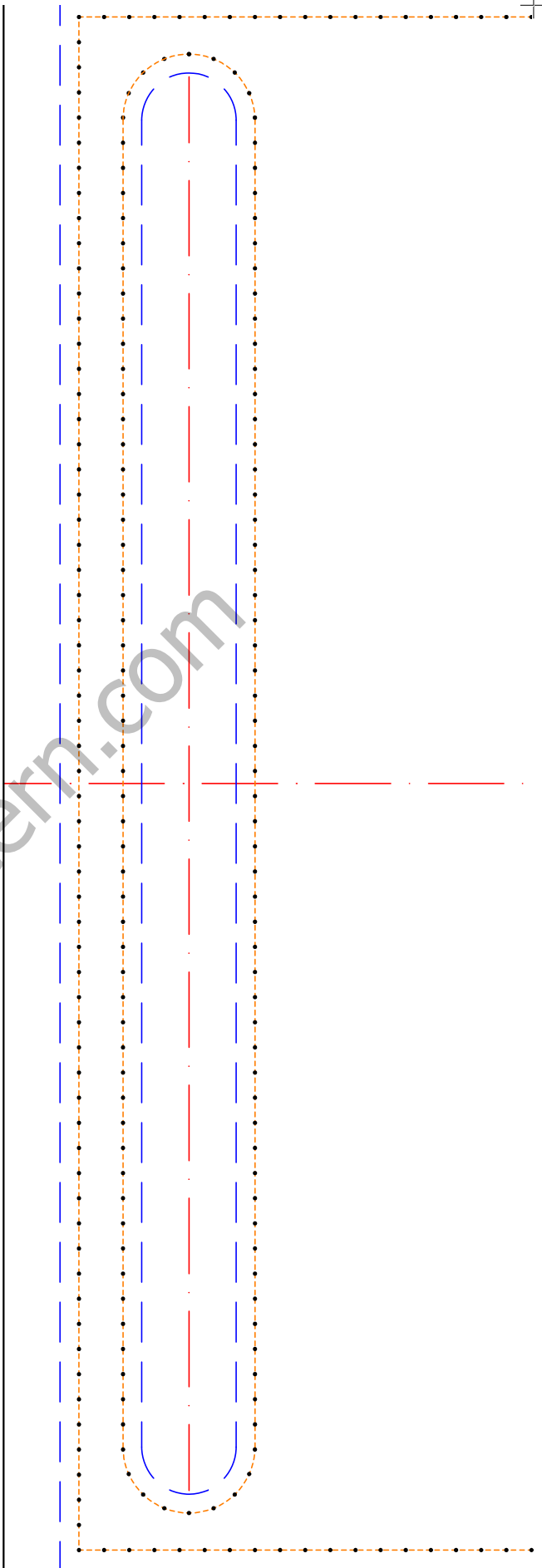
www.lzpattern.com



BDQ-19 Inside pocket1 x1
A04(joint A01)

www.lzpattern.com

www.lzpattern.com





BDQ-

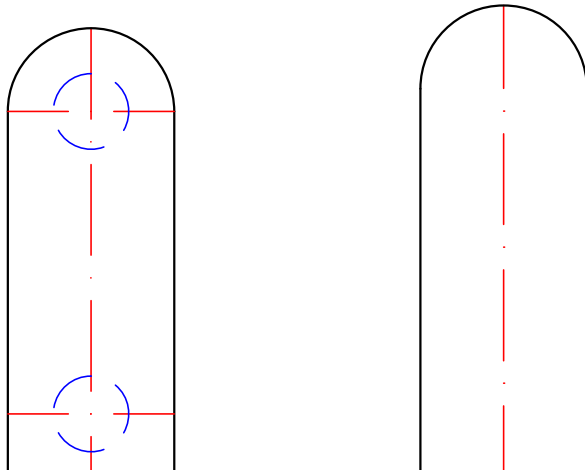
A

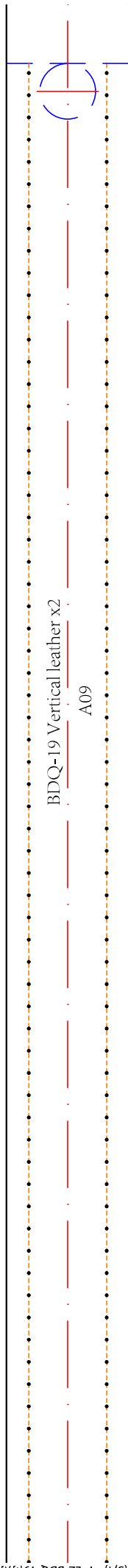
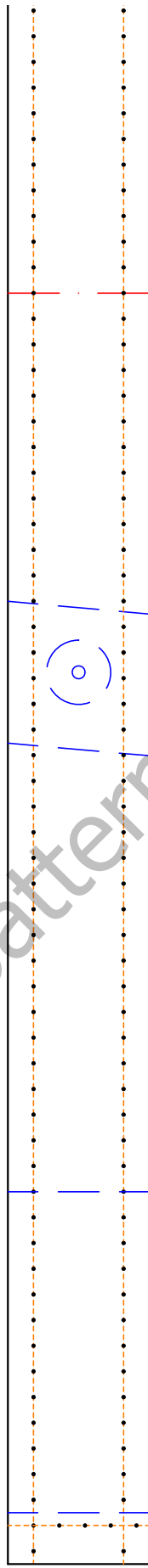
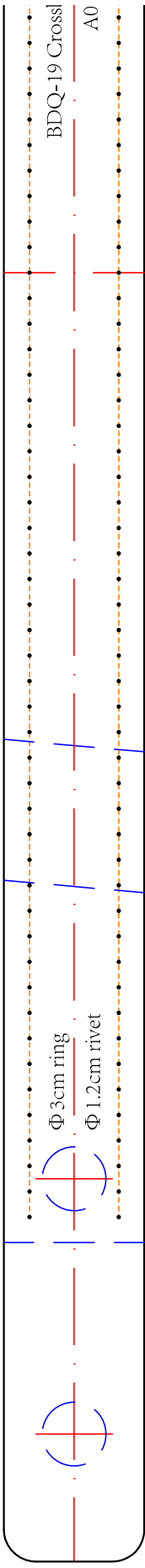


www.lzpattern.com



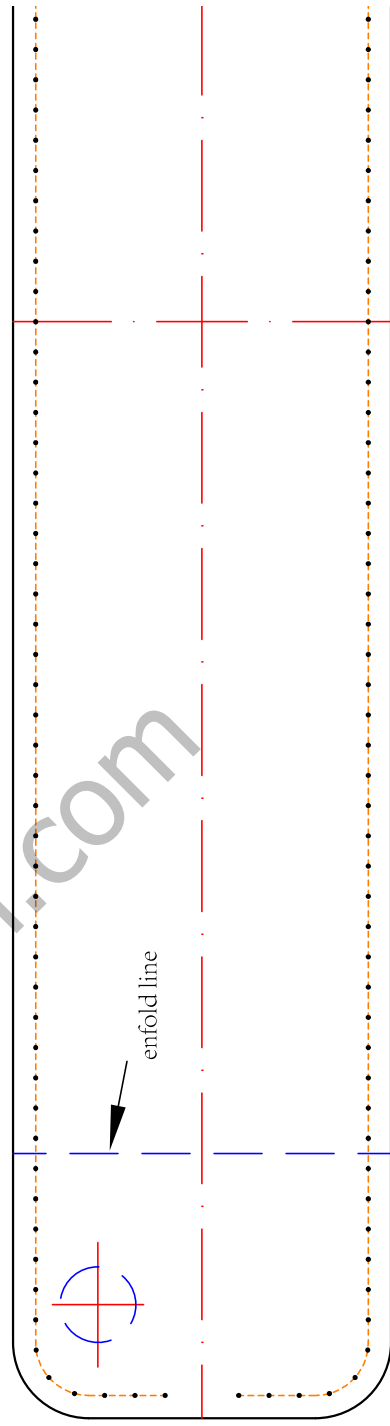
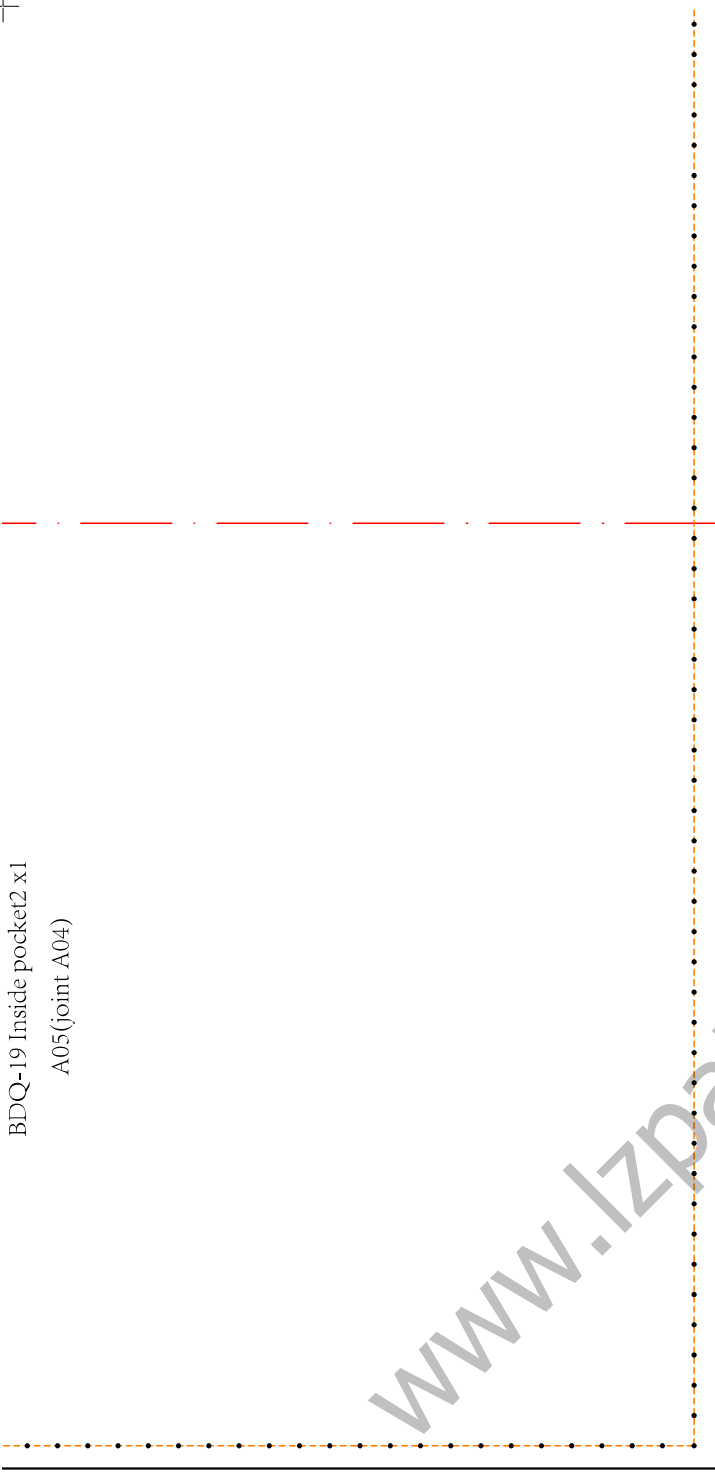
www.lzpattern.com





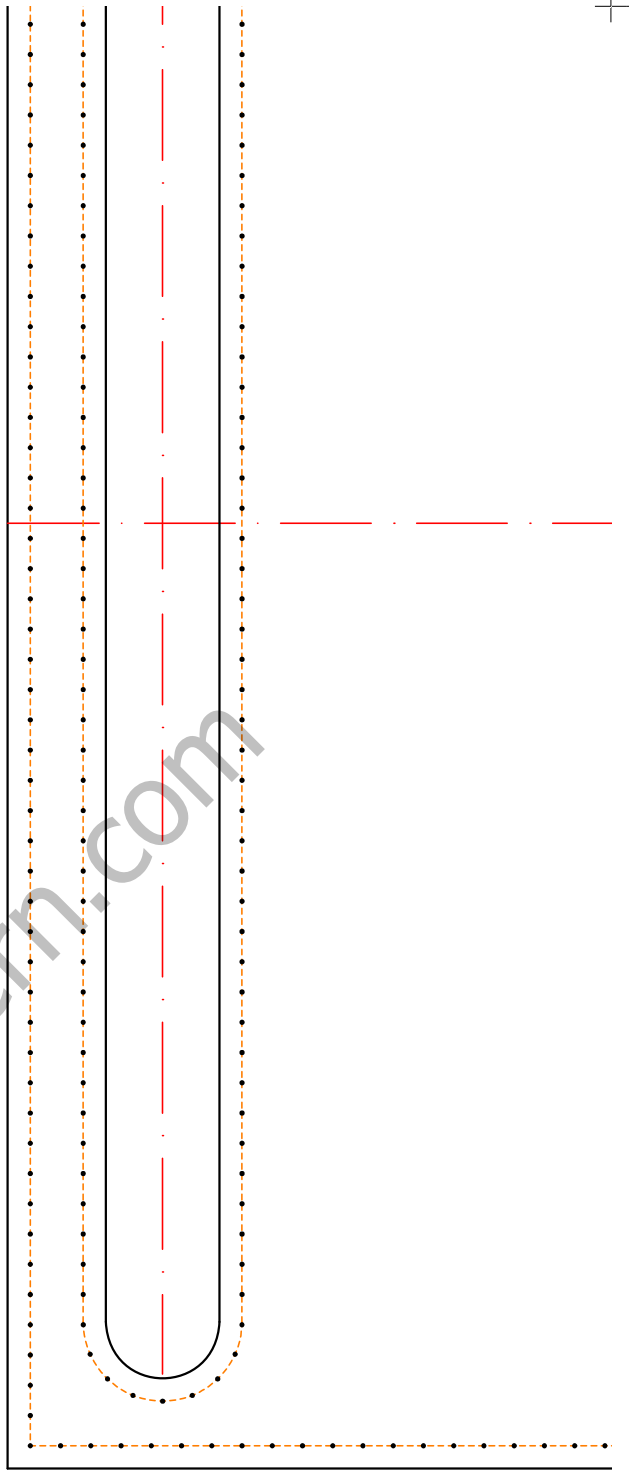
www.lzpattern.com

BDQ-19 Inside pocket2 x1
A05(joint A04)



enfold line

www.lzpattern.com

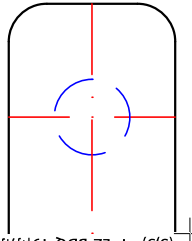
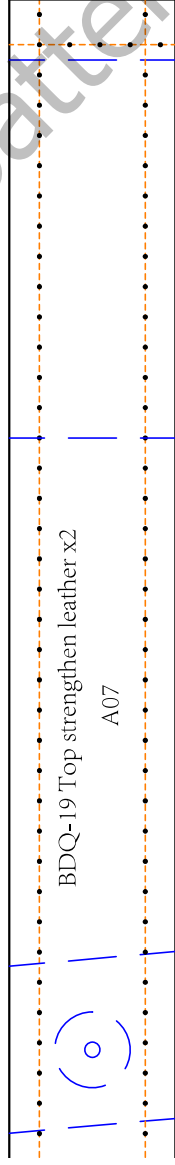
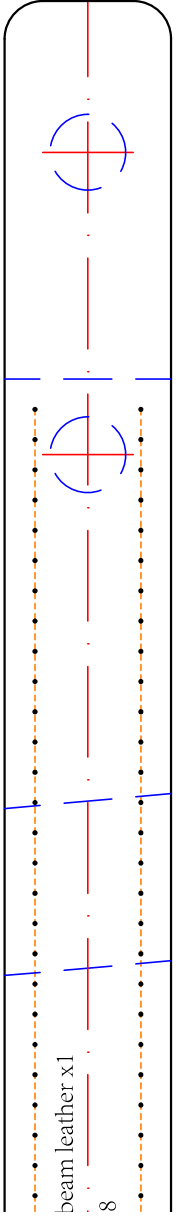


19 multi-role bag

v0 print 1:1

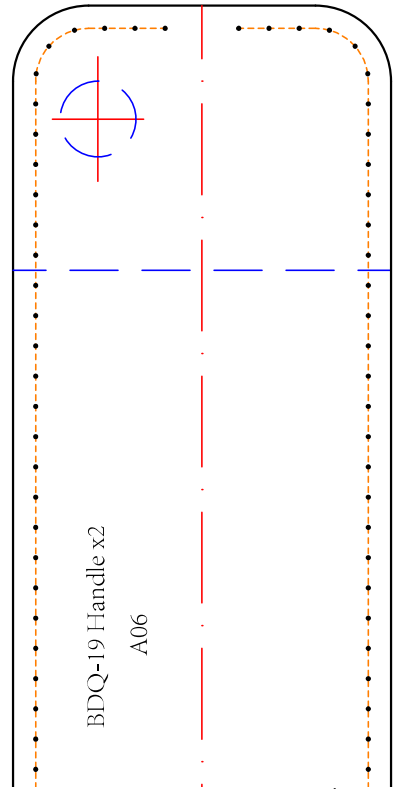
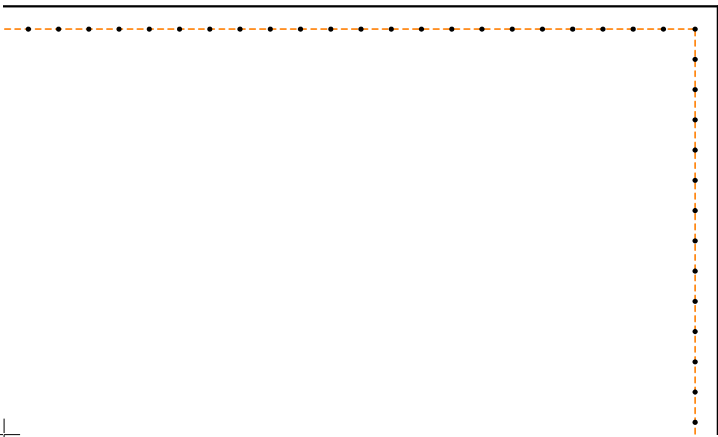
www.lzpattern.com

www.lzpattern.com



www.lzpattern.com

www.lzpattern.com



www.lzpattern.com

