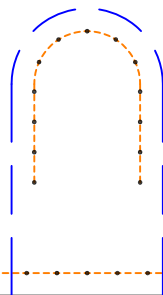


LWP-31 Surface x1
A01

Note: 1.8mm leather is advised.

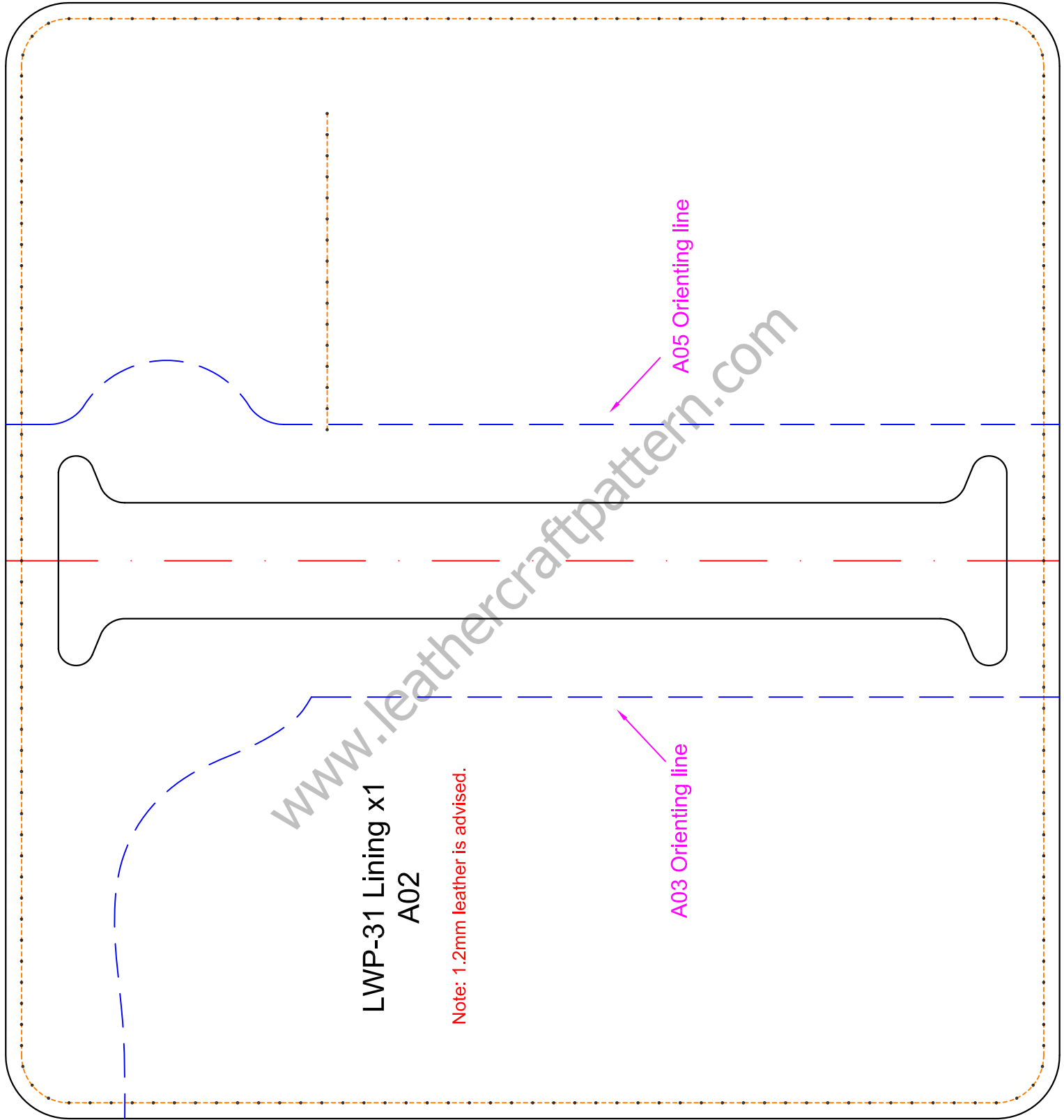


A06 Orienting line



A07 Orienting line

www.leathercraftpattern.com



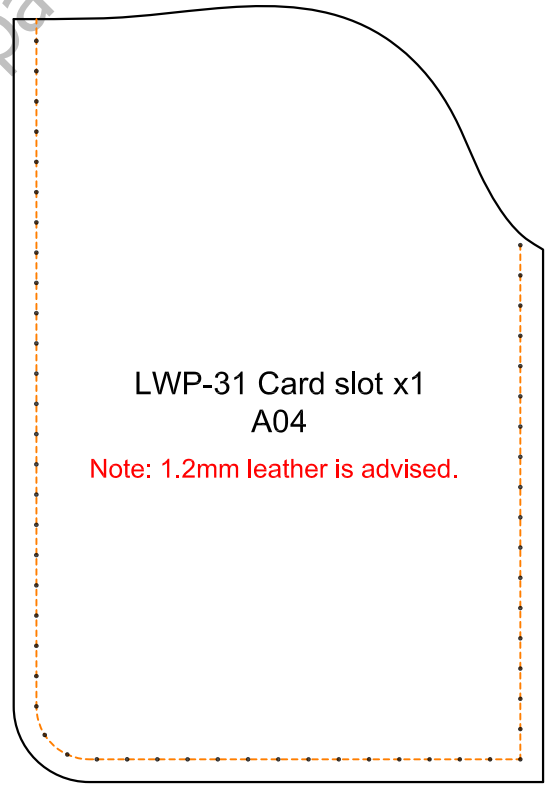
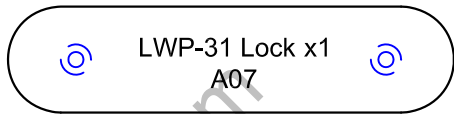
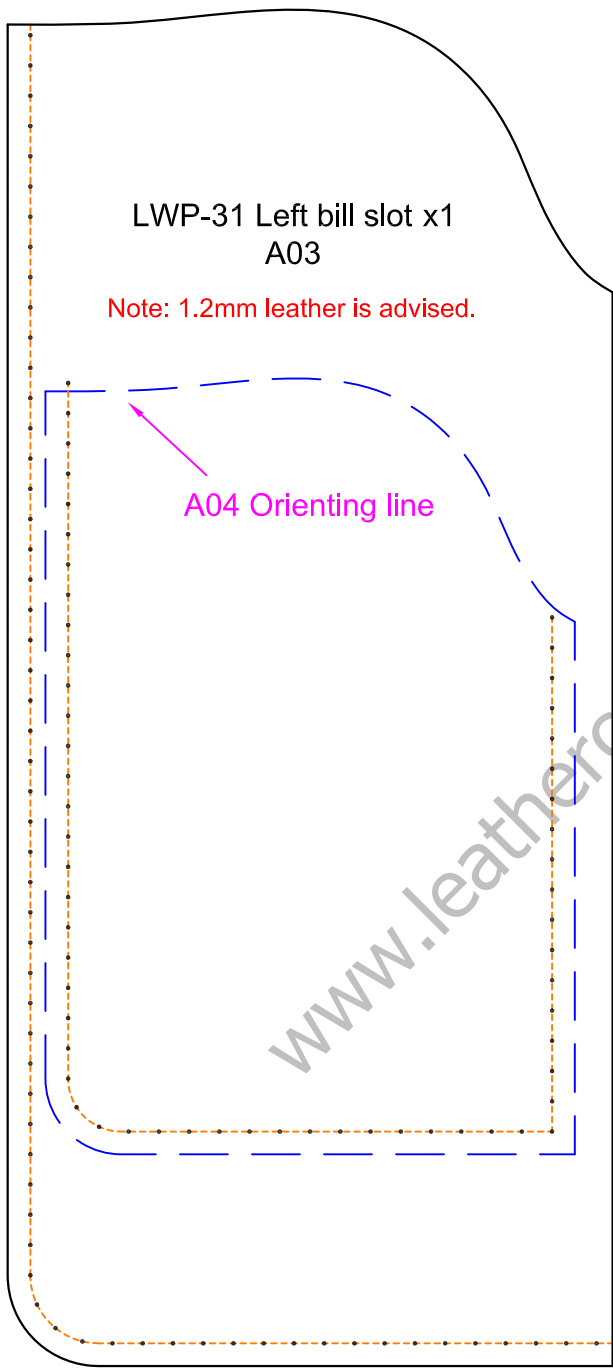
LWP-31 Lining x1
A02

Note: 1.2mm leather is advised.

A05 Orienting line

A03 Orienting line

www.leathercraftpattern.com





LWP-31 Right passport slot x1
A05

Note: 1.2mm leather is advised.

www.leathercraftpattern.com



LWP-31 Strap x1
A06