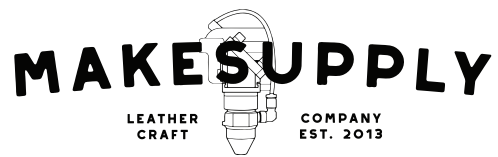
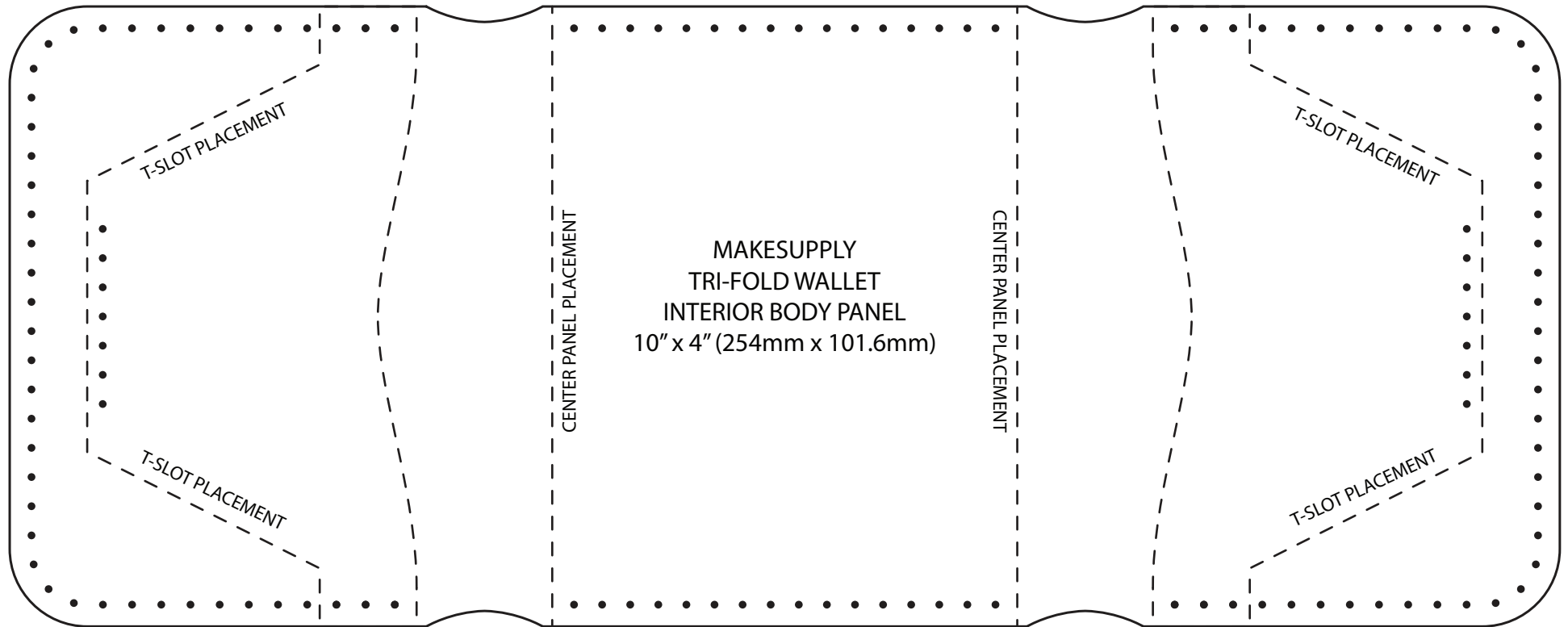


A / B PIECE CONNECTOR
 GLUE OR TAPE THE CENTER OF 'PIECE A' TO
 THE CENTER OF 'PIECE B' BY MEETING AT
 THE CENTER LINE. THIS WILL FORM THE FULL PATTERN.



IMPORTANT!

Please make sure that print scale is set to 100% and "auto-scaling" is turned off prior to printing.

